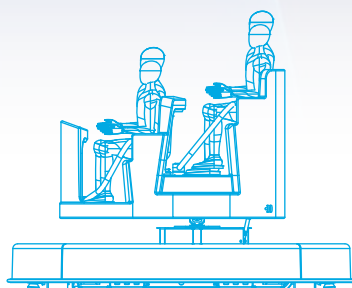
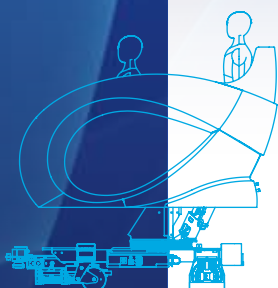




## ETF Xperience Mover



**ETF**

*imaginative engineering*

[www.etf.nl](http://www.etf.nl)



The Xperience Mover with motion platform offers a unique ride experience with more opportunities for new ride concepts. It not only creates seamless synchronisation between media scenes and movement of the vehicle. It also produces intense movements to match these media scenes.

You'll be amazed by the enhanced movements of the body, the acceleration and turning speed as well as the pitching and rolling.

## A unique ride experience

The **trackless vehicle** is extremely flexible in ride design with manoeuvres like splits and mergers, dead-end and reverse movements, roundabouts, crossings, etc. The **trackbound vehicle** is mechanically linked with a track enabling more dynamic speeds in travel direction and in terms of rotations.

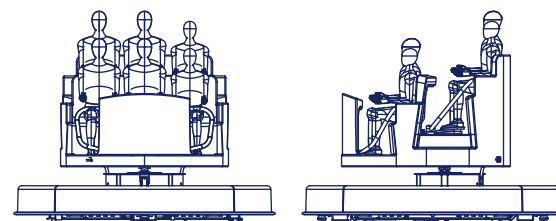
In the standard lay-out the 6 passengers are seated in 2 rows of 3 guests each. Alternatively 4 passengers can occupy the vehicle in 2 rows of 2 guests each. For passenger safety and comfort a lap bar is available. The upper body can be made to customers' specifications.

The Xperience Mover concept is complete with its own **ride control package**. This package controls:

- speed per track section or scene;
- orientation of the passengers compartment of the vehicle, per track section or scene. This orientation refers to rotation, pitching and rolling of the passengers compartment;
- safe operation of the vehicles on the track and in the station.

The trackless vehicles will run over a smooth concrete floor with no inclines. Vehicles are energised by on-board batteries which can be charged overnight. Fitted with 48 volt batteries or opportunity charging the ride operates very long hours.

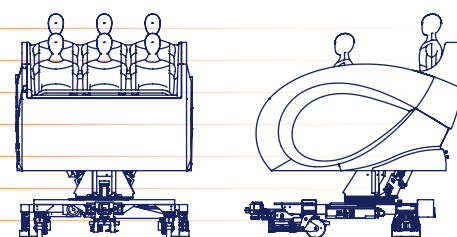
Trackbound vehicles will also run over a smooth concrete floor. With the Xperience Mover the need for inclines is limited but if required inclines can be considered. The trackbound vehicles are energised by bus-bars which run parallel to the track.



Xperience Mover, trackless

## ETF Xperience Mover

Xperience Mover	trackless	trackbound
Maximum vehicle speed	1,5 m/s	1,8 m/s
Minimum turning radius	1,6 m	2,5 m
Maximum rotation angle	> 360 degrees	> 360 degrees
Maximum rotation speed passenger compartment	8 rpm	10 rpm
Maximum pitch angle	8 degrees	8 degrees
Average pitch speed	14,5 degrees/sec	14,5 degrees/sec
Maximum roll angle	8 degrees	8 degrees
Average roll speed	14,5 degrees/sec	14,5 degrees/sec
Approximate width of track including safety envelope	3,1 m	3,5 m



Xperience Mover, trackbound