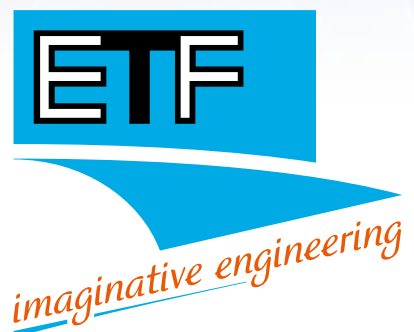
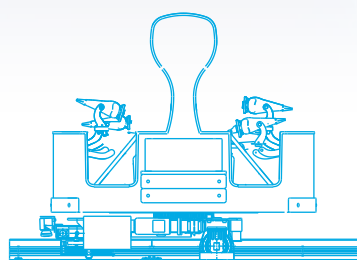
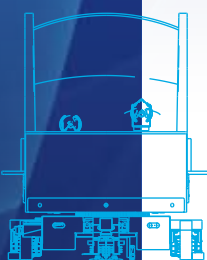




## ETF track bound Multi Mover





The ETF track bound Multi Mover is suitable for indoor applications in amusement parks, museums etc. It is the ideal transportation system for interactive, animated attractions like dark rides.

## Create a multimedia ride experience

The system can be supplied with either **individual vehicles or a 'train' of 2 or 3** vehicles linked together. Depending on the application this link can be either mechanical or electronic. A single centre tube is installed for the guidance of the vehicles which also houses the power supply and the communication line to the vehicles.

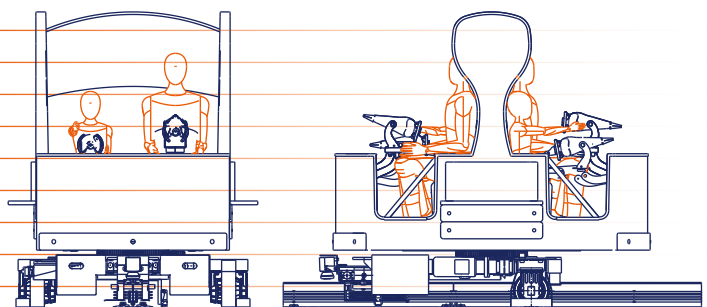
Vehicle speed and unlimited rotation of the body can be programmed and modified easily. Dynamic effects are realized by quick acceleration and rotation of the vehicles. Each single vehicle can carry either 4 or 6 persons on two benches. Those **benches can be located behind each other or back to back**. The track bound Multi Mover can accommodate special seating or themed arrangements according to your requirements. A lap-bar system is used as a passenger seat restraint system.

An **on-board multiple channel sound system** can be integrated. This allows multi language operation of the ride. **Special effects** such as air blast moments and seat vibration are possible. The Multi Mover system can also be fitted with an **optional two-way communication system** allowing visitors to **interact** with animated exhibits or 2D/3D media presentation. There is a number of possibilities in this area such as target shooting systems and similar competitive features.

Needless to say that the ride control system can easily be interfaced with the show control of the ride.

## ETF track bound Multi Mover

Typical track length	150 - 350 m
Track type	single centre track tube
Application	indoor
Typical no. of vehicles	8 - 30
Vehicle options	single or combined as train
Vehicle capacity	4 - 6 people
Ride capacity per hour	570 - 1.440 people
Maximum speed	1,9 m/s
Minimum horizontal curve	2,5 m
Maximum incline	10 degrees



ETF Ride Systems  
ETF-USA Corporation

P.O. Box 2703, 6030 AA Nederweert, Holland. Phone +31 (0)495 677000. Fax +31 (0)495 632323. E-mail sales@etf.nl. www.etf.nl  
P.O. Box 2506, USA. Phone +1 (706) 278-1511. Fax +1 (706) 278-3511. E-mail harrell@windstream.net