

JANUARY 2020

ETF

News

43

imaginative engineering

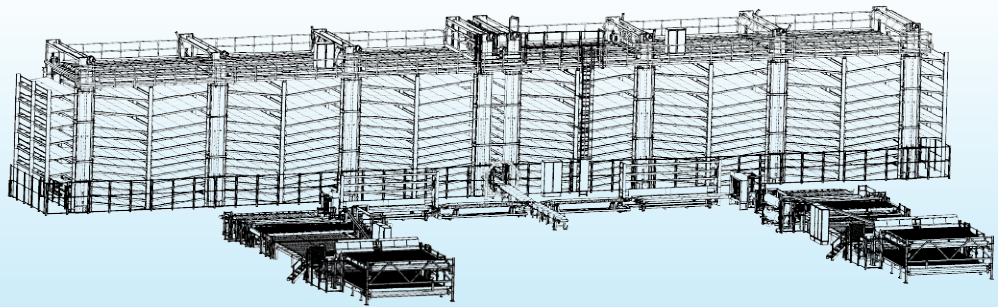
IN THIS EDITION

The Headlam group

ETF is present at DOMOTEX 2020

Offline extension for upgraded wrapping quality

Goodbye and hello ETF



Cut length and sorting system

DOMOTEX 2020

See us at hall 11 • booth A23

Production machines

Cutting and finishing

Logistic systems

Cutting and measuring systems

Special machines

As the existing premises are confined Headlam has decided to build a new regional distribution centre in Ipswich in order to grow the existing business. ETF is honoured that it has also been asked to supply the new, state of the art, cut length and sorting equipment for this new distribution centre as well.

The total system contains, among other elements, two large cut length machines which allows them to make up to 1,200 fully wrapped cut lengths during an 8 hour shift with just four operators. Thanks to an advanced roll transport system, all the cut lengths are fed to a fully automatic sorting system which contains fourteen racks with 12 declining shelves on top of each other. This

system allows about 2.000 ready cut lengths to be stored temporarily before they are loaded onto the distribution trucks at night.

Through a link between the sophisticated ETF software and Headlam's warehouse management system software, the complete cutting and sorting process is fully automated, meaning that no paperwork is required at all. After the operator at the input side of the cut length machine has identified the parent roll, all the settings of the cut length machines are adjusted within a second. When the operator feeds in the starting edge of the material, the requested wrapped cut length is made automatically. The second operator then applies an

Continued on page 2



Dear Reader,

Let me start by wishing you, your family and colleagues a very healthy, happy and successful 2020.

The start of a new year is also the time to reflect on the previous one. ETF can look back at a very good 2019. Once again, we extended our factory, by another 1000m², and business premises. All our engineering skills, mechanical, electrical and software, are now merged into one building. We also increased our team and created many new ideas for the future. We are absolutely ready for it and looking forward to it.

However, this would not have been possible without all our customers. So a very big thank you to you all! Thanks for all the trust you have given us over the years and which has enabled us to grow now.

In this ETF News, we will report on a few new interesting projects. Some together with new customers, but also with a returning one. After 38 years they are saying goodbye to their old ETF machine and are now going to work with a brand new one. That represents a very nice form of recognition for our company.

Finally, if you are visiting DOMOTEX, I would like to welcome you at our booth. Our team is always ready to discuss your plans and the possible solutions that ETF can offer you. We would be happy to use our many years of knowledge and expertise to help you further – both in 2020 and beyond...

Ruud Koppens, President

Follow-up article page 1.

automatically generated label to the cut length and closes one roll end manually to allow the pintrucks to take the cut length from the shelf of the sorting system after which it must be loaded. The second roll end is automatically closed by an ultrasonic sealing unit on its way from the cut length machine to the sorting system.

Once the new cutting and sorting system is installed, Headlam will be able to serve their customers in the most optimal way. And by taking care of the daily maintenance themselves and having the system checked and maintained by ETF's specialists once a year, they are guaranteed a reliable working system with maximum uptime.

ETF is present at DOMOTEX 2020

This world's leading exhibition in the field of floor coverings will take place at the exhibition site in Hannover, Germany from 10th to 13th January 2020.

DOMOTEX is the place where all the major floor covering suppliers come together each year to present their complete product range of floor coverings that are available worldwide.

ETF Machinefabriek B.V. will be participating in this important trade fair and you are most welcome to visit us at our booth no. A23 in hall 11. We look forward to seeing you there!

Visit us: Hall 11 • Booth A23

10-13 January 2020
Hannover • Germany

DOMOTEX

ATMOSPHERE



Custom offline packaging line for artificial grass

Offline extension for upgraded wrapping quality

ETF is currently performing the final assembly works on a custom offline packaging line for artificial grass rolls. This machine is being built for one of ETF's valued customers, UnitedWorks BV, located in the heart of the Dutch carpet industry, and it is set to be taken into operation before the end of the year.

UnitedWorks approached ETF for this project because a piece of customer specific engineering was required to extend their existing production line with a new wrapping method. Since no space was available for an 'in line' solution, an 'off line' concept was developed in close collaboration with the customer.

This ETF wrapping system will upgrade the roll wrap quality which the end customer will notice first when receiving the UnitedWorks turf rolls. The wrapping machine seamlessly follows the production machine without reducing capacity.

The system handles each turf roll or set of turf rolls in a controlled manner. Rolls are transported out of line by a wagon towards the wrapping line automatically. During transport, roll diameter and roll width(s) are measured and used to pre-set the wrapping line before the turf roll(s) arrive. The rolls are then transferred onto the wrapping line, one by one. All transported rolls can be buffered on the wrapping machine, enabling the transport wagon to return to its position at the end of the production line. At the wrapping line, each roll is individually packed with a minimum of foil, after which it will be ejected onto a buffering table for pick-up. Smart safety features have been incorporated to prevent any contact between the operators and the heavy product rolls.



Goodbye and hello ETF

After 38 years of use at JAB Teppiche in Germany, one of their ETF M 5630 cut length machines is being replaced by a brand new successor. The new machine incorporates modern improvements which have been made over all those years, including a future-proof human interfacing system via touch panel operation.

With over 160 cut length machines supplied all over the world, ETF's cut length machines are well known in the industry and wholesale world for their reliability and performance (up to 60 cuts/hour), which are key values for us, as well as for our customers. This particular machine is executed for handling rolls up to 5 meters wide, has a rotational function for carpet direction, variable speed drives, smart adjustment functions for cross-cutting as well as slitting, an automated film dispenser for packaging, and paper core handling.

The control system will be linked with the central computer system at JAB, thus enabling automatic cut length program loading at the click of a button.

Last but not least, this machine will be presenting a new look for ETF carpet handling machinery. We are confident that, thanks to this new ETF machine, JAB Teppiche will be able to produce many more consumer rolls in the years to come.



ETF Machinefabriek B.V.

P.O. Box 2703
6030 AA NEDERWEERT, the Netherlands
Phone +31 (0)495 677000
E-mail sales@etf.nl
www.etf.nl

ETF-USA Corporation

P.O. Box 2506
DALTON, GA 30722, USA
Phone +1 (706) 278 1511
E-mail harrell@windstream.net

ETF

imaginative engineering